

Kögel Parts Load-securing Campaign Weeks



Kögel Trailer GmbH & Co. KG

Department After Market | Parts

Office address /Postal address:
Heuweg 3
89079 Ulm
Germany

Pickup address/Goods unloading:
Boschstraße 25
89079 Ulm
Germany

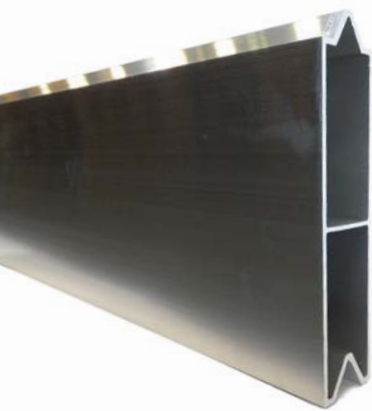
fon: +49 1805 563435-36
fax: +49 731 9454-23679
E-Mail: parts@koegel.com

KÖGEL

Kögel Trailer GmbH & Co. KG | Industriestrasse 1 | Burtenbach 89349 | Germany
phone +49 8285 88-0 | fax +49 8285 88-17905 | info@koegel.com
www.koegel.com



01/06/2017 – 31/07/2017



Sample illustration

Aluminium 'V' slats

115 x 25 x 3200 mm
Item No. 6602160

50 - 99 pcs. **19.50**
100 - 299 pcs. **18.00**
300 pcs. and above **17.00**
(Minimum order quantity: 50 pcs.)

140 x 25 x 3555 mm
Item No. 339498

50 - 99 pcs. **24.50**
100 pcs. and above **22.50**
(Minimum order quantity: 50 pcs.)

140 x 25 x 3200 mm
Item No. 344632

50 - 99 pcs. **21.50**
100 pcs. and above **20.00**
(Minimum order quantity: 50 pcs.)

Wood side slats planed

96 x 25 x 3245 mm
DIN 4073

Item No. 6609364 **4.50**

100 x 25 x 3200 mm
DIN 4073

Item No. 6419595 **4.50**



Sample illustration



Variable pallet limiting rail

As the slats are attached with cotter pins, it is easy to mount and remove the pallet limiting rail. The height of the limiting rail can also be varied between 125 mm and 250 mm.

125 mm pallet limiting rail = 6111092 or 6111093 plus corresponding mounting kits
250 mm pallet limiting rail = 6111092 + 6118902 or 6111093 + 6118903 plus corresponding mounting kits

Load-securing slat with pins

3200 mm length
Item No. 6111092 **80.00**

3075 mm length
Item No. 6111093 **78.00**

Load-securing slat with pins and guide

3200 mm length
Item No. 6118902 **95.00**

3075 mm length
Item No. 6118903 **92.00**

Mounting kit for load-securing slat

3 mounting kits are required to mount a load-securing slat
Item No. 6111000 **7.50**



Locking beam

Toothed rack version
2350 mm - 2700 mm rubber foot

Item No. 304303 **29.00**



Locking beam

Webbing version
2500 mm - 3100 mm rubber foot

Item No. 6609089 **44.00**



Tie beam

BC 1000 daN, 2400 - 2520 mm,
for 18-35 mm drop sides

Item No. 6607929 **40.00**



Edge protector

185 x 145 x 150 mm
specially for paper rolls

Item No. 6612155
100 - 299 pcs. **3.00**
300 pcs. and above **2.70**
(Minimum order quantity: 100 pcs.)



Door stays

With grease filling and mounting
plates
Length 415 mm

Item No. 6300320 **11.90**



Door stays

With grease filling and mounting
plate (height 55 mm), length
440 mm, bracket 258 mm,
stroke 215 mm

Item No. 6356080 **8.00**



Door stays

With grease filling, length
440 mm, stroke 215 mm,
angle bracket 23 mm

Item No. 349739 **11.80**



Wheel chock

Plastic version,
without steel strut, width 200 mm

Item No. 6601135 **5.80**

Plastic version, with steel strut,
width 200 mm

Item No. 6607845 **6.00**



Lashing strap with long lever

8 m with long lever,
LC 2500 daN, STF 600 daN

Item No. 6613058 **9.90**

10 m with long lever,
LC 2500 daN, STF 600 daN

Item No. 6613060 **10.80**



Lashing strap with short lever

8 m with short lever,
LC 2000 daN, STF 320 daN

Item No. 6613073 **6.00**

10 m with short lever,
LC 2000 daN, STF 320 daN

Item No. 6613074 **6.60**

For order quantities exceeding 100 pieces, the lashing straps with short levers can be printed with the company's name **free of charge** (lead time 2 weeks; maximum number of letters: 24).



Anti-abrasion sleeve

Red, 0.5 m
for 50 mm lashing straps

Item No. 6613067 **1.20**



Safety wedge

Paper roll wedge
adjustable

Item No. 572497 **45.00**



Belt lift system

System 501
Belt lift units: 12 pieces
only to be used with tension
straps, width: 50 mm

Item No. 6357273 **400.00**



Anti-slip mat

5000 x 250 x 8 mm

Item No. 6607678 **14.00**